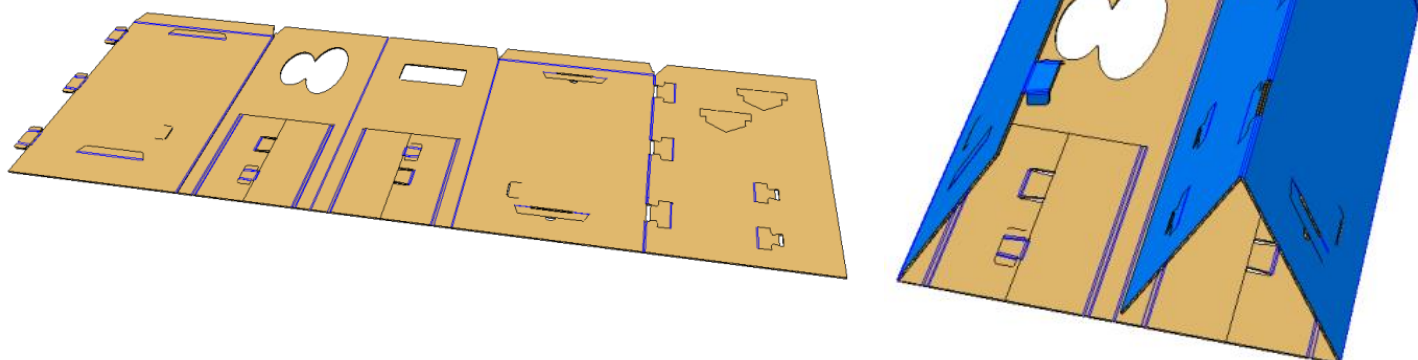
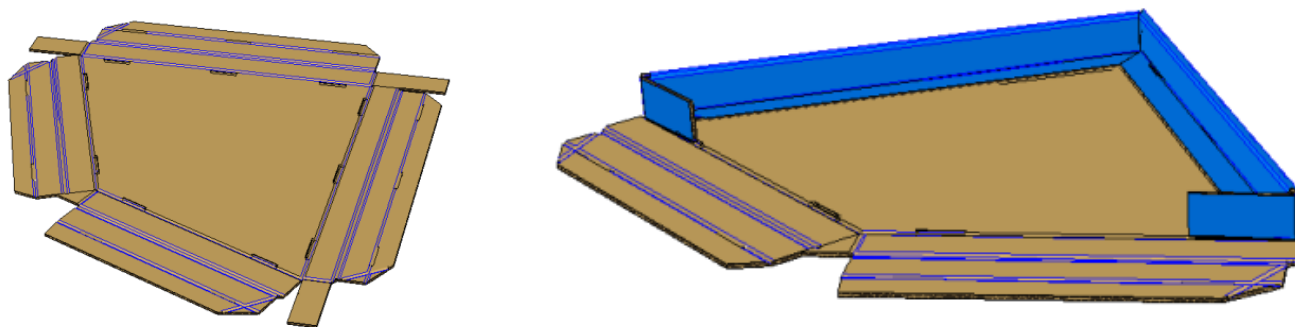


## MONTAGE DE CHAQUES ELEMENTS /

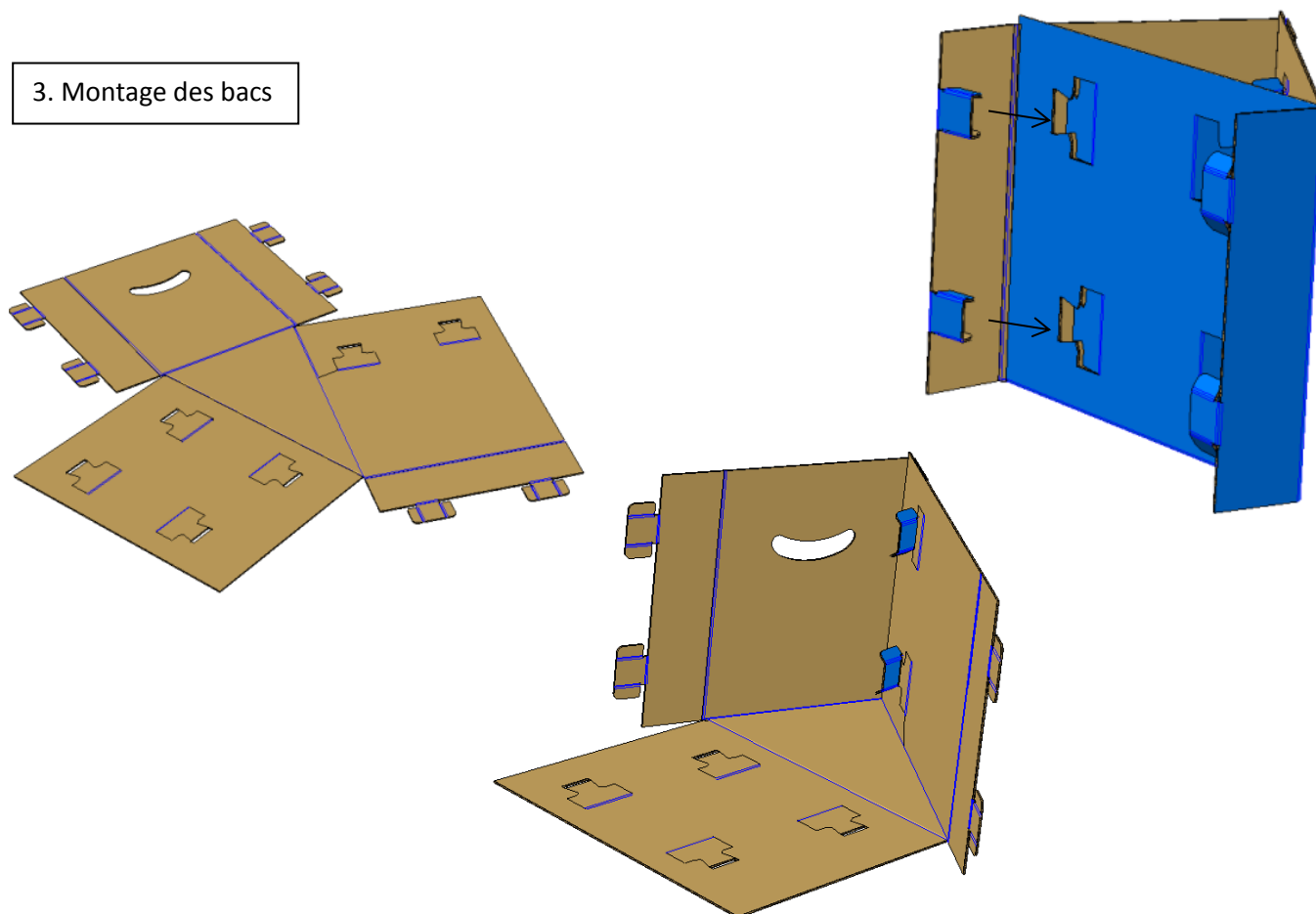
### 1. Formation du socle principal



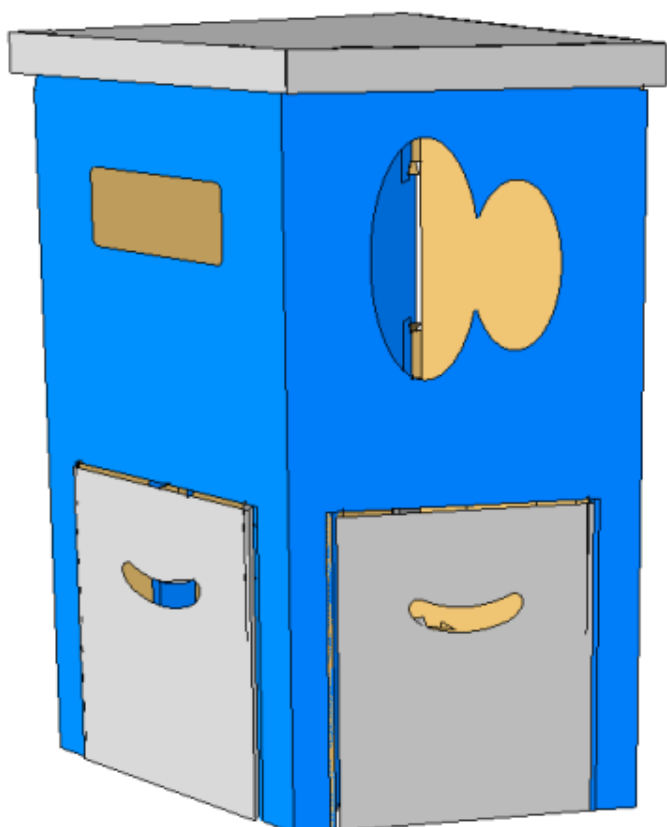
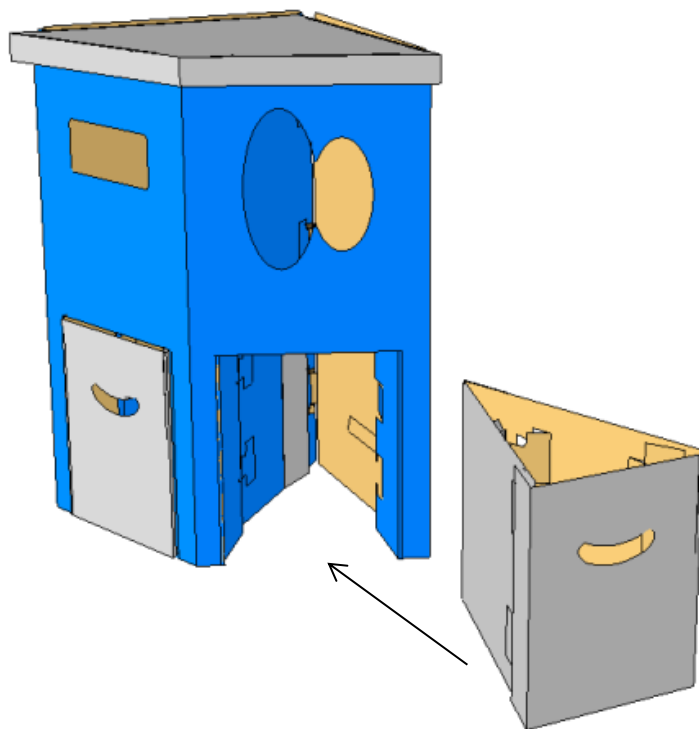
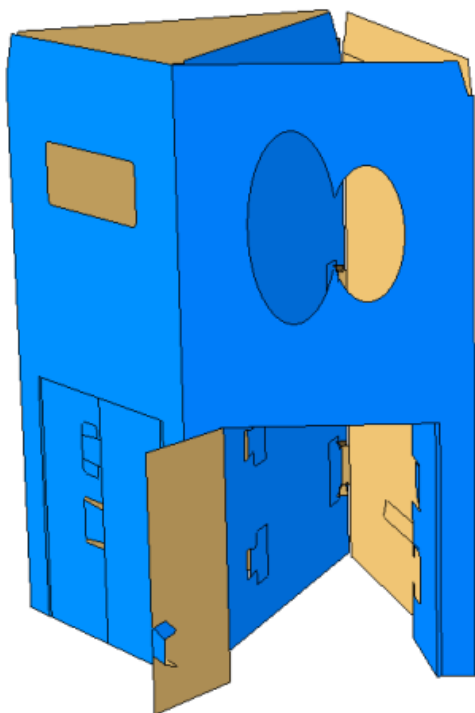
### 2. Montage du couvercle par encliquetage



### 3. Montage des bacs



## ASSEMBLAGES DES ELEMENTS /



### Note :

Si assemblage de 2 modules, utiliser les clés de blocage entre les deux. Ces clés sont prédécoupées sur l'une des faces (non visible) du socle.

